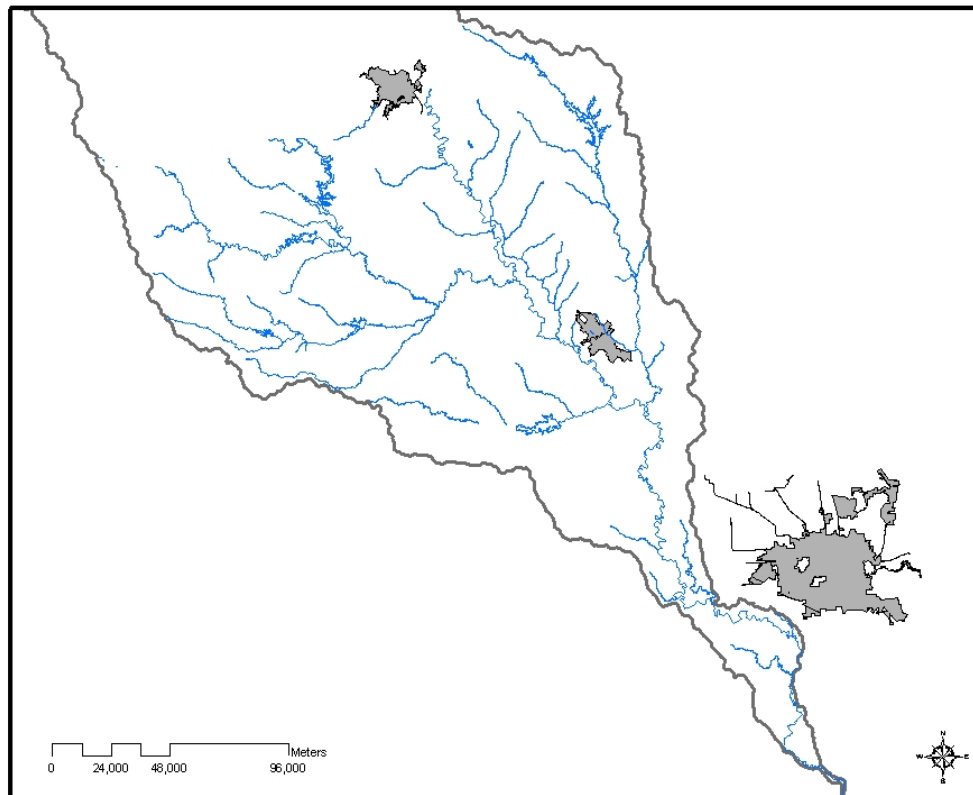


Water Quality in the Brazos Basin

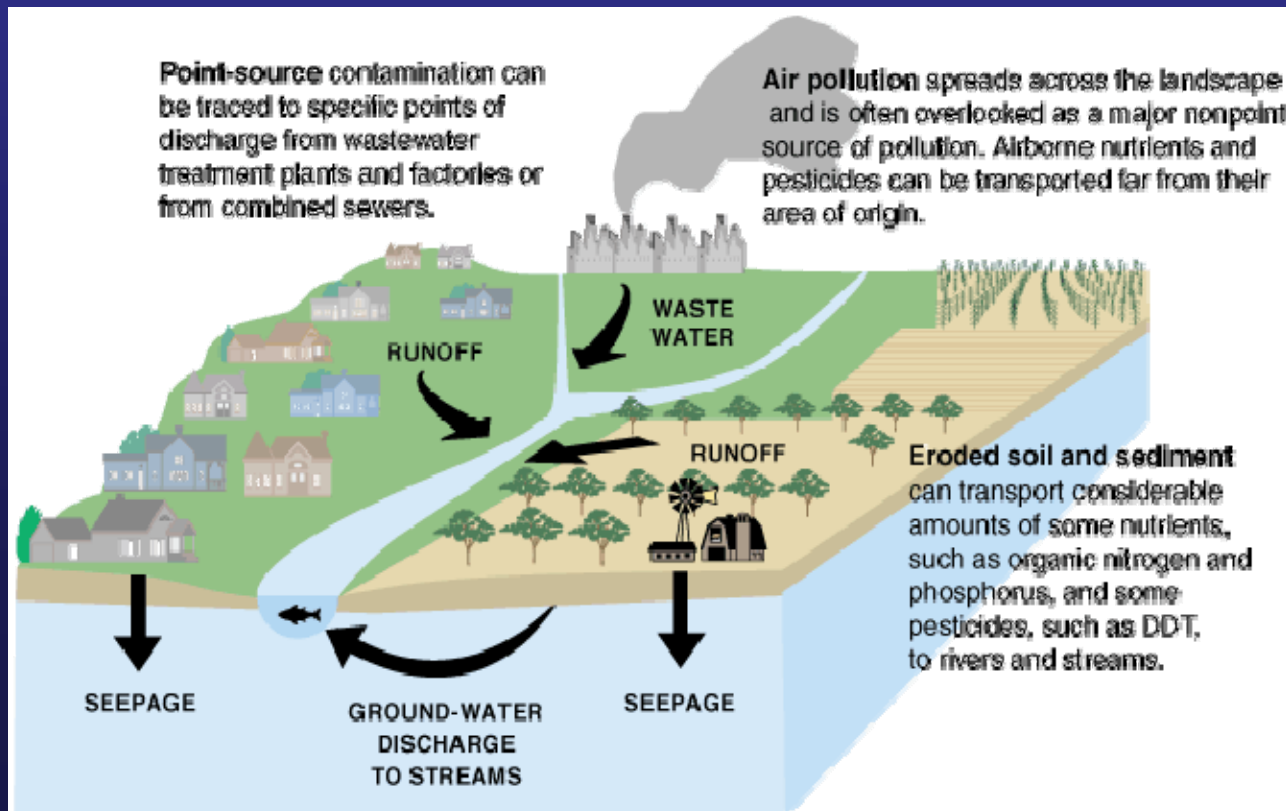
Dakus Geeslin

Texas Commission on Environmental Quality



What is Water Quality

- Physical, chemical, and biological characteristics in relation to a set of standards
- Aquatic Life Use, Contact Recreation, Public Water Supply, Fish Consumption



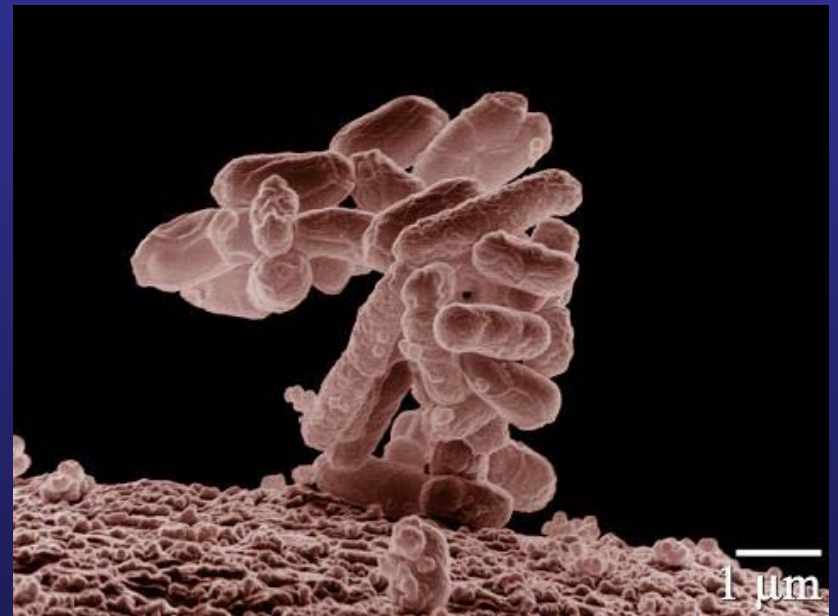
Standards Criteria

Segment No.	Segment Name	Uses			Criteria						
		Recreation	Aquatic Life Use	Domestic Water Supply	Cl ⁻¹ (mg/L)	SO ₄ ⁻² (mg/L)	TDS (mg/L)	DO (mg/L)	pH (SU)	indicator bacteria #/100ml	Temp
1202	Brazos below Navasota	Contact Recreation	High	Public Supply	300	200	750	5	6.5-9.0	126/200	95 F
1242	Brazos above Navasota	Contact Recreation	High	Public Supply	350	200	1000	5	6.5-9.0	126/200	95 F



Concerns

Thompson's Creek, Campbell's Creek, Mud Creek, Pin Oak Creek, Spring Creek, Tehuacana Creek, Big Creek, Allen's Creek, and Upper Oyster Creek all have elevated E. Coli levels.



Bacteria

Concerns

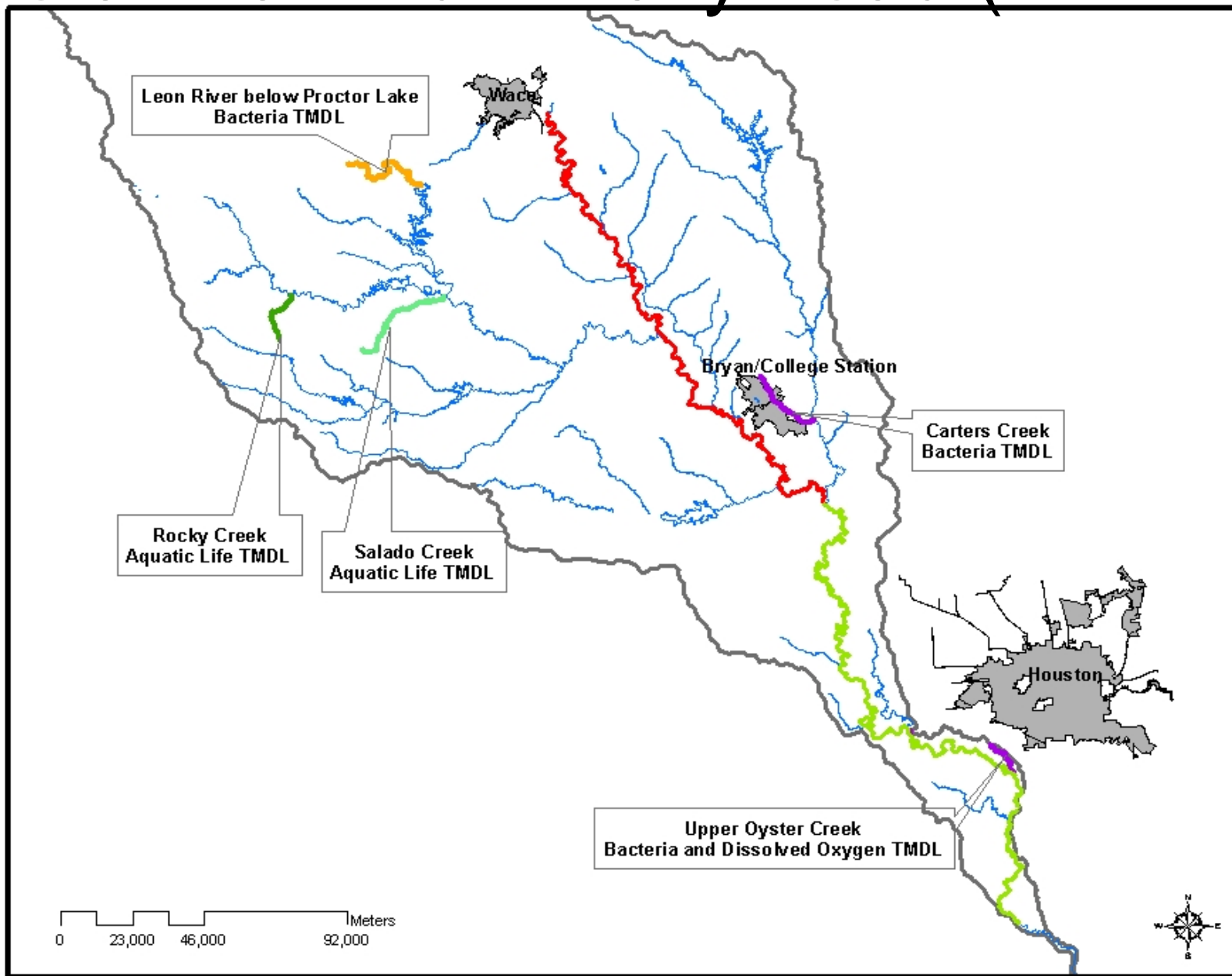


Still Creek, Cottonwood
Branch, Thompson's
Creek, and Allen's Creek

Nutrients



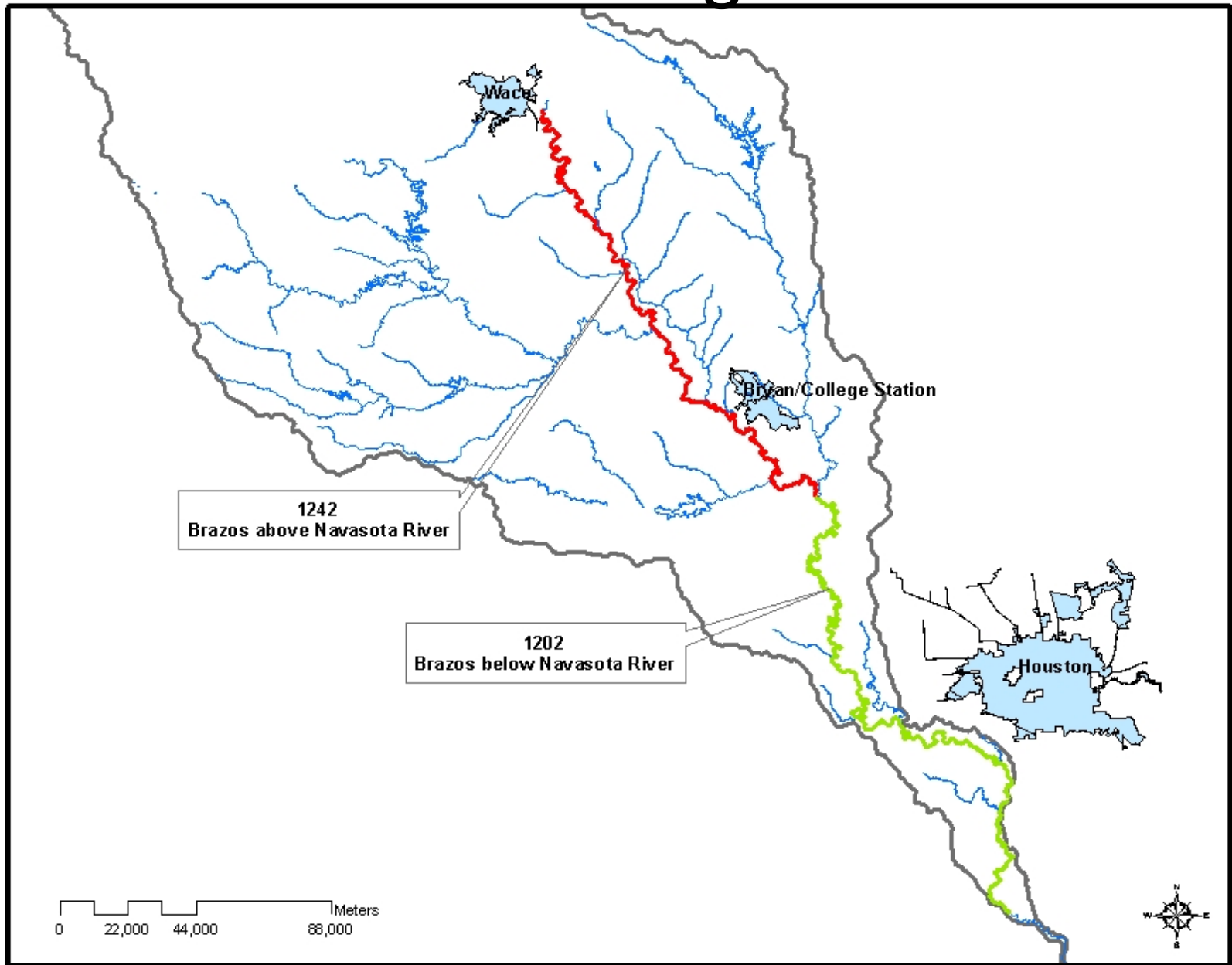
Total Maximum Daily Load (TMDL)



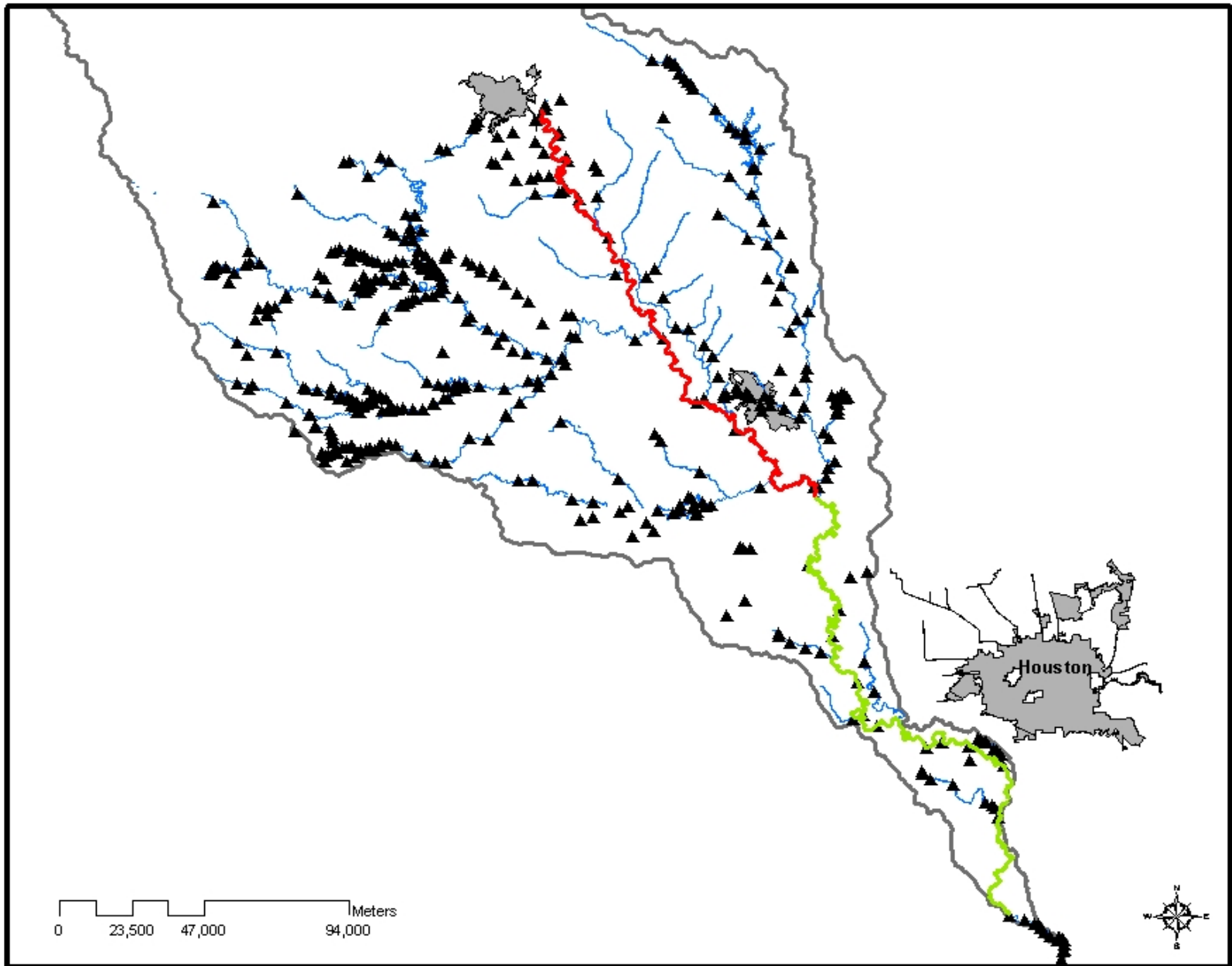
TMDL Implementation

- Adjustment of effluent limitation in permits
- Schedule of elimination of pollutant
- Identification of nonpoint sources
- Modification to a storm water program

Classified Segments



TCEQ Surface Water Quality Monitoring Stations



Clean Rivers Program

- The Texas Clean Rivers Program incorporates water quality monitoring, assessment, and public outreach.
- The program is a collaboration of 15 partner agencies (ex. SARA, BRA, etc.) and the TCEQ.
- The CRP works as a hub for participating collaborators to provide data as well as coordinated watershed protection.

Goal and Objectives

- A Middle and Lower Brazos River that provides for sustainable environmental, economic, and social uses.
- Manage flow-related water quality to sustain ecological, economic, and social processes and productive capacity.

Web Resources

Water Quality Standards

http://www.tceq.state.tx.us/nav/eq/eq_swqs.html

TMDL

<http://www.tceq.state.tx.us/implementation/water/tmdl/index.html>

Clean Rivers Program

<http://www.tceq.state.tx.us/nav/eq/texcleanriver.html>

BRA Basin Report

http://www.brazos.org/BasinSummary_2007.asp